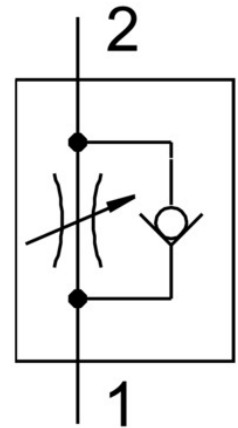


One-way flow control valve GRLA-1/4-QB-3/16-U

Part number: 534660

FESTO



Data sheet

Feature	Value
Type code	GRLA
Valve function	Exhaust air flow control non-return function
Pneumatic connection 1	QB-3/16
Pneumatic connection 2	1/4 NPT
Actuation type	Manual
Adjusting element	Slotted screw
Type of mounting	Screw-in With external thread
Standard nominal flow rate in flow control direction	1207.63 l/min
Standard nominal flow rate in non-return direction	929.237 l/min ... 1230.508 l/min
Ambient temperature	0 °C ... 60 °C
Mounting position	Any
Symbol	00991452
Operating pressure for entire temperature range	-0.951 bar ... 7.998 bar
Standard flow rate in flow control direction 6 → 0 bar	1728.8 l/min
Standard flow rate in non-return direction at 6 → 0 bar	1728.814 l/min ... 1805.085 l/min
Operating medium	Compressed air as per ISO 8573-1:2010 [7:4:4]
Information on operating and pilot media	Operation with oil lubrication possible (required for further use)
Temperature of medium	0 °C ... 60 °C
Max. tightening torque	12.067 Nm
Product weight	34.02 g
Material of screwed trunnion	Brass Nickel-plated
Note on materials	Contains paint-wetting impairment substances RoHS-compliant
Seals material	NBR
Hollow bolt material	Brass Nickel-plated
Releasing ring material	POM

Feature	Value
Knurled head material	Brass Nickel-plated
Material of adjusting screw	Brass Nickel-plated
Swivel joint material	PBT-reinforced